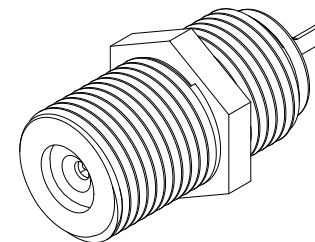
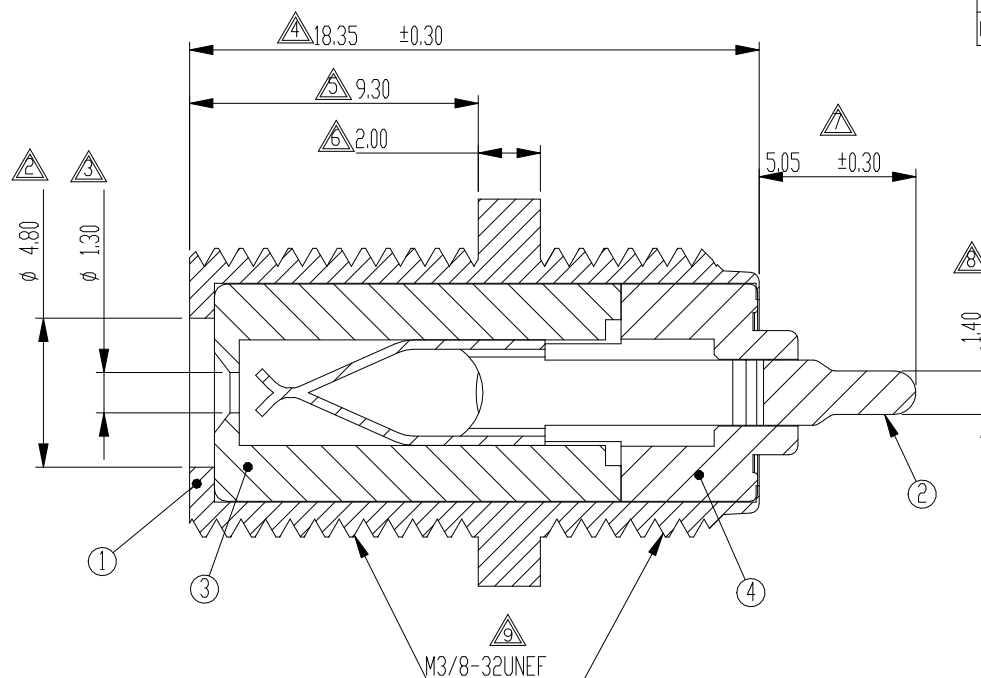
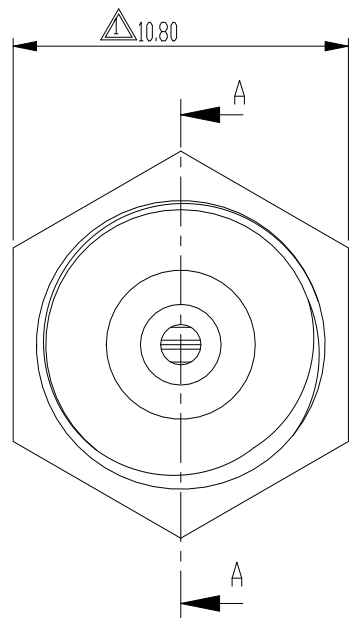


F
E
D
C
B
A



RoHS
Compliant

Level-1 Controlled Substances are banned

NOTE: UNLESS OTHERWISE SPECIFIED

1. MATERIAL: BODY: BRASS


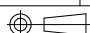
2. FINISH: BODY: ELECTROPLATE Ni 1~3um

3. ALL DIMENSIONS MUST BE WITHIN SPECIFIED TOLERANCES AFTER PLATING

4.1 SALT CONCENTRATION: 5%

4.2 TEMPERATURE OF SALT SOLUTION: 3 ±5°C

4.3 PH RANGE OF SALT SOLUTION: 6.5 ~ 7.2

4	OUTTER INSULATOR	1	PP	WHITE	_____		
3	INNER INSULATOR	1	PP	_____	_____		
2	CONTACT	1	BRONZE	_____	Sn PLATING		
1	BODY	1	BRASS	_____	Ni PLATING		
NO.	DESCRIPTION	QTY	MATERIAL	COLOR	REMARK		
GENERAL TOLERANCE UNLESS OTHERWISE NOTED			<div> 盛聪电子有限公司 SHENG CONG ELECTRONIC CO.,LTD</div>				
General		Angle		CUSTOMER COPY	TITLE:	RF	SERIES
X.±0.50		X°±3°					
.X±0.30		.X°±2°					
.XX±0.20		.XX°±1°					
			PART NO.	SCF-206-D			
PROJ:		SCALE:	4:1	UNIT:mm	REV:	A4	SHEET: 1 OF 1

						DESIGN	Jason	16'/04/11	
						CHECK	Jason	16'/04/11	
	0	16'/04/11	NEW	Jason	Max.hu	APPRO.	Max.hu	16'/04/11	
ECN(DCN) NO.	REV	DATE	DESCRIPTION	CHANGE	APPRO.				

Original: Design: Jason Check: Jason Appro: Max.hu DATA: 11'/04/11